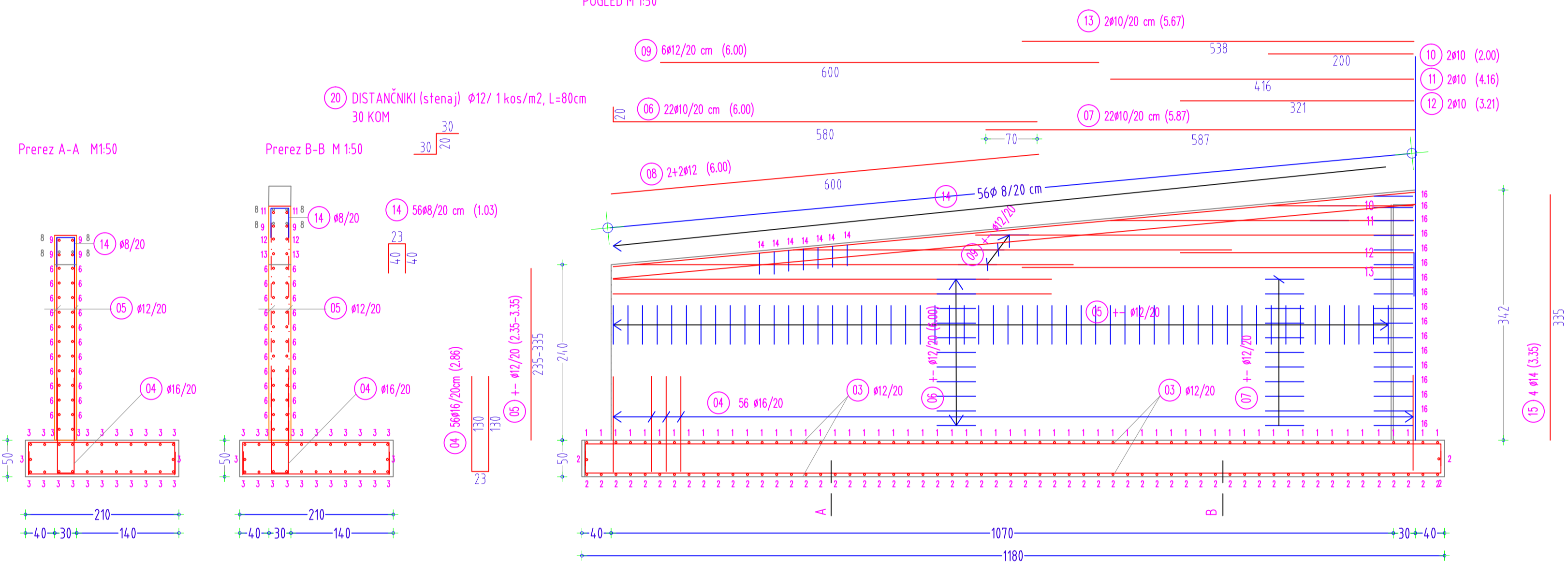


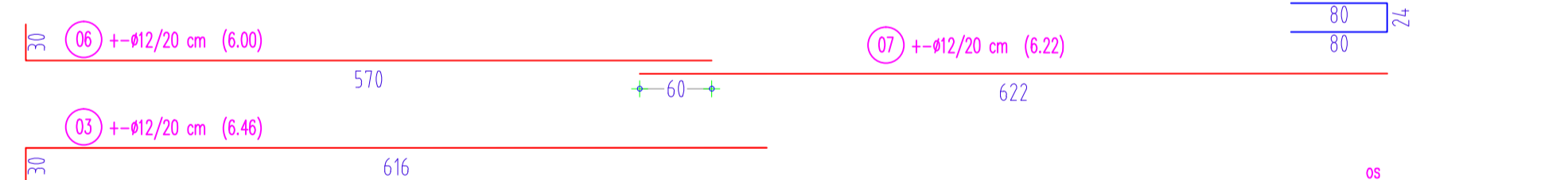
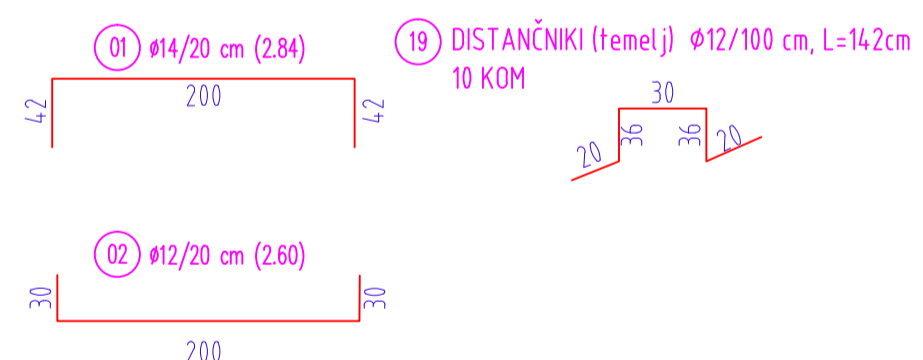
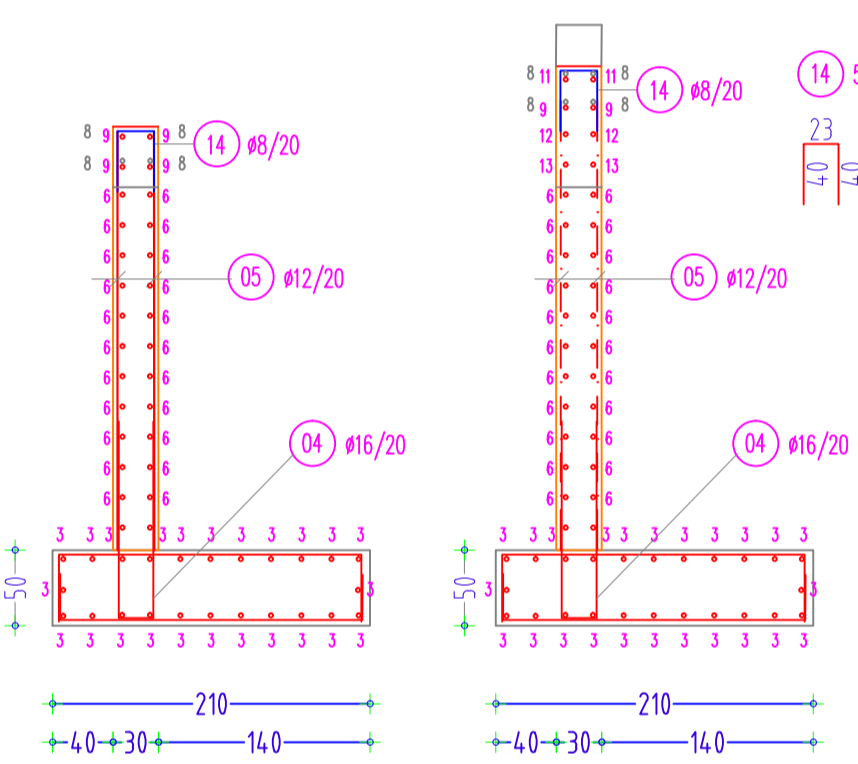
ARMATURA AB OPORNEGA ZIDU D=30CM, BETON C 25/30, ARMATURA S500

POGLED M 150

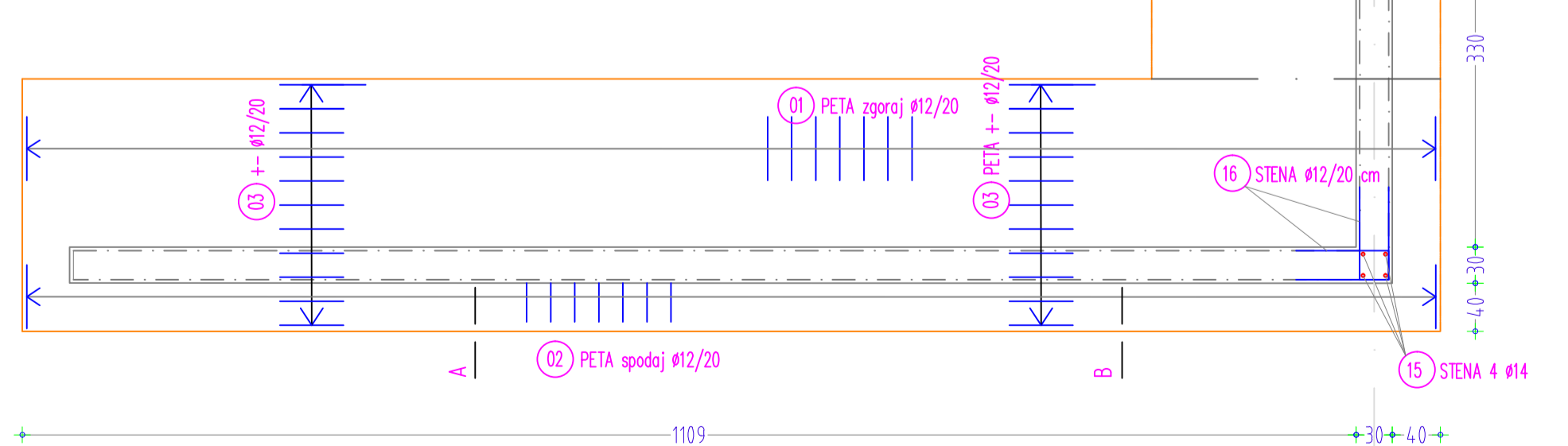


Prerez A-A M150

Prerez B-B M 150



TLORIS M 150



IZVLEČEK ARMATURE						
ZOBRAVILA	POZ	UČET ČUČA	L(m)	KOM	<A A (	<A A (
1	1	14 mm	2.84	60		170.40
2	2	12 mm	2.60	62		161.20
3	3	12 mm	6.46	26		167.96
4	4	16 mm	2.83	56		158.48
5	5	12 mm	2.85	108		307.80
6	6	10 mm	6.00	22	132.00	
7	7	10 mm	6.12	22	134.64	
8	8	10 mm	6.00	8	48.00	
9	9	10 mm	6.00	8	48.00	
10	10	10 mm	3.00	2	4.00	
11	11	10 mm	4.16	2	8.32	
12	12	10 mm	3.21	2	6.42	
13	13	10 mm	5.67	2	11.34	
14	14	8 mm	1.03	56	57.68	
15	15	14 mm	3.25	4		13.00
16	16	12 mm	1.84	34		62.56
17	17	12 mm	1.42	10		14.20
18	18	12 mm	0.80	30		24.00
		SKUPAJ L (m)			57.68	392.72
		e-osa A-B FD			0.405	0.633
		USVILAVARČICE G: L x g (kg)			23.36	248.59
		USVILAVARČICE G: L x g (kg)				672.06
		USVILAVARČICE G: L x g (kg)				277.78
		USVILAVARČICE G: L x g (kg)				256.90
		USVILAVARČICE G: L x g (kg)			945 kg	
		USVILAVARČICE G: L x g (kg)			485 kg	

Armaturni načrt  
AB OPORNI ZID M 1:50  
BETON C 25/30  
REBRASTA ARMATURA S 500